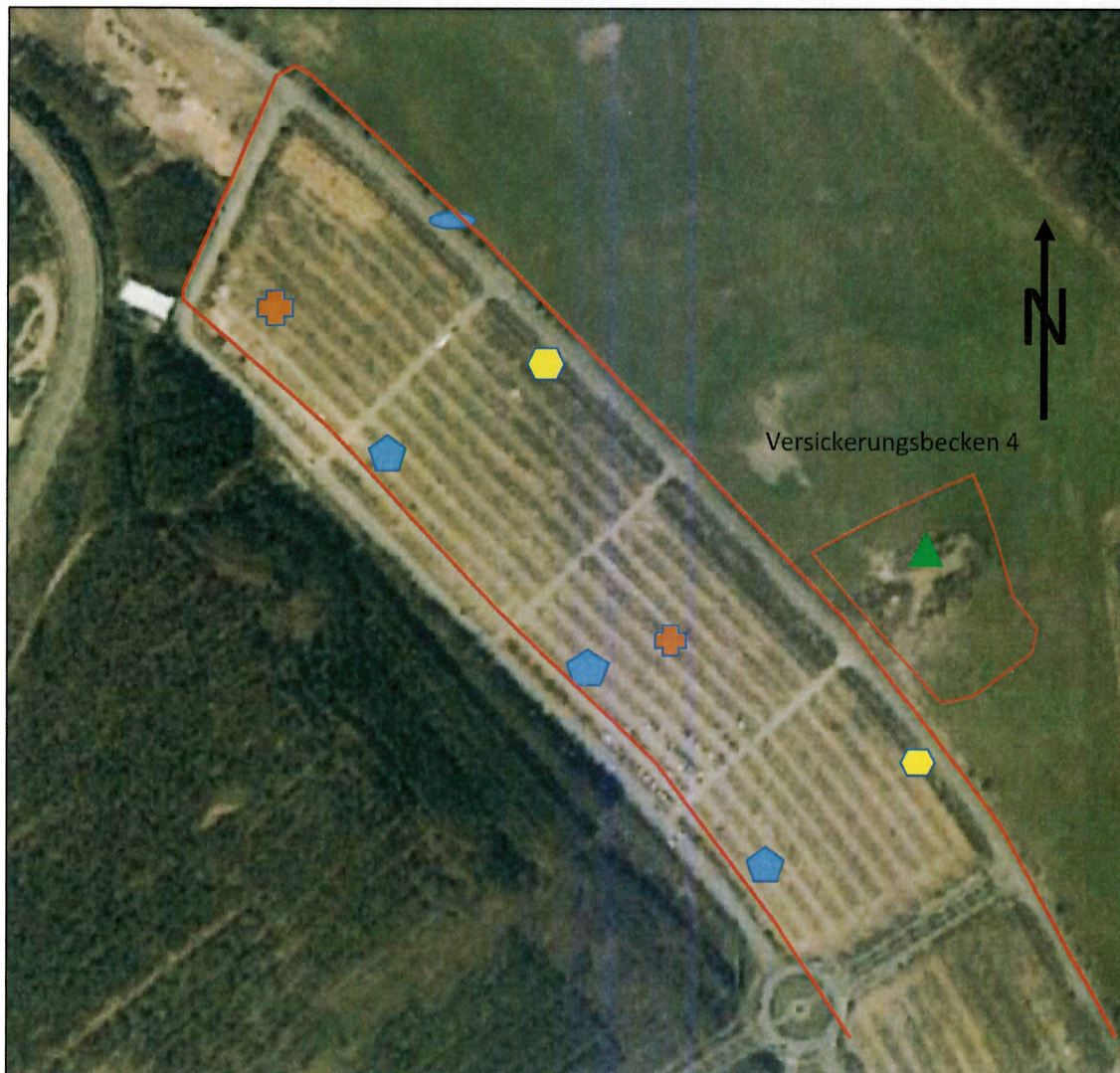








Anhang 2

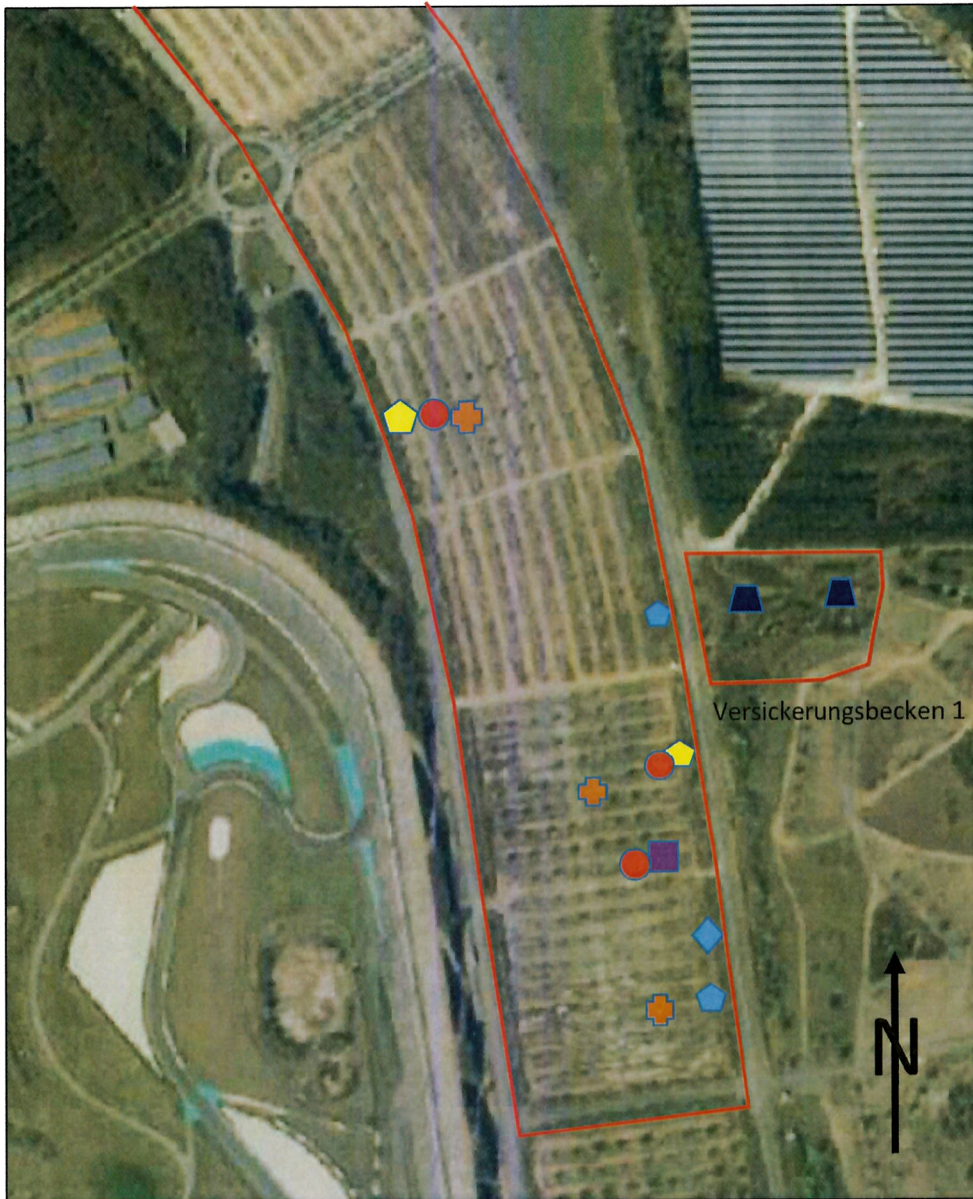
Graphische Darstellungen der Brutreviere, Zauneidechsen- vorkommen und der geplanten Kompensationsrahmenfläche



**Karte 1: Lageplan Parkplatz 1 und Versickerungsbecken 4 (©GeoBasis-DE/LGB),
ohne Maßstab**





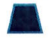



Legende:

	Untersuchungsgebiet		Zauneidechse
	Feldsperling		Dorngrasmücke
	Heidelerche		Goldammer



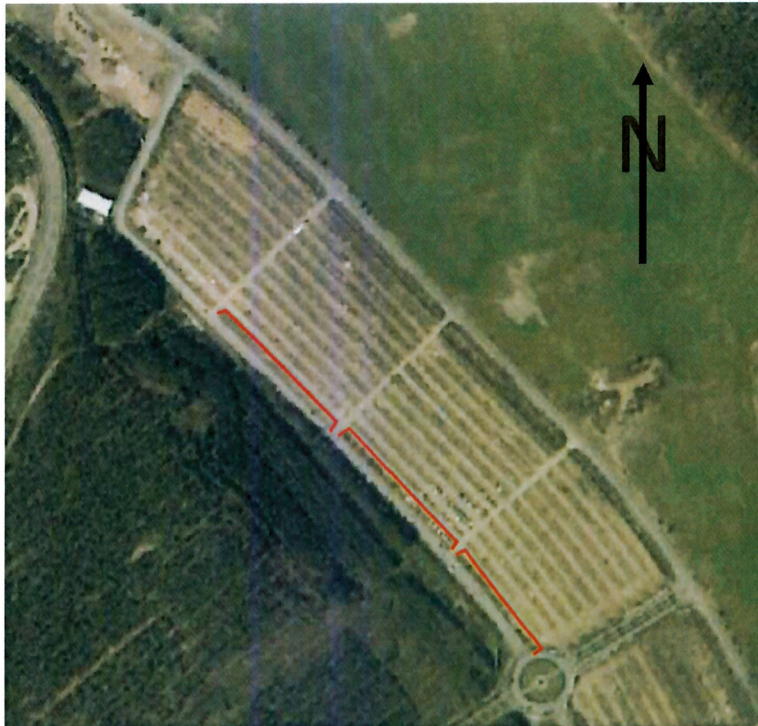
Karte 2: Lageplan Parkplatz 2 und Versickerungsbecken 1 (©GeoBasis-DE/LGB), ohne Maßstab

Legende:

	Untersuchungsgebiet		Zauneidechse
	Höhlenbaum		Heidelerche
	Mönchsgrasmücke		Goldammer
	Buntspecht		Ringeltaube



Karte 3: Kompensationsrahmenfläche K1, K3 der Gemarkung Meuro Flur 1, Flurstück 256/19, z.T. (©GeoBasis-DE/LGB)



Karte 4: Lageplan Parkplatz 1 und Versickerungsbecken 4 (©GeoBasis-DE/LGB), ohne Maßstab

Lage des zu etablierenden Reptilienzauns ———



Karte 5: Lageplan Parkplatz 2 und Versickerungsbecken 1 (©GeoBasis-DE/LGB), ohne Maßstab

Lage des zu etablierenden Reptilienzauns 

